

PRO-ISO-PHY-TETRA-4

Four-TETRA-Station Combiner

DESCRIPTION

- The PRO-ISO-PHY-TETRA-4 combiner provides the possibility of connecting up to four TETRA radios into one common antenna.
- The PRO-ISO-PHY-TETRA-4 models are available in the frequency range 380 - 420 MHz.
- ETSI compliant connection of four digital radios.
- The PRO-ISO-PHY-TETRA-4 is the successor to the PRO-MIX-PHY-TETRA-N-4RXI.
- The PRO-ISO-PHY-TETRA-4 has improved isolation between the ports - more than 60 dB - and lower insertion loss.
- The use of high-quality system components such as highly selective helical duplex filters and high-performance isolators provides high isolation and secure communication.
- The smallest and most compact design on the market.
- Suitable for both stationary and mobile use.
- Also available in tray for 19" rack mounting.
- Vibration and shock tested in accordance with EN-60068**.

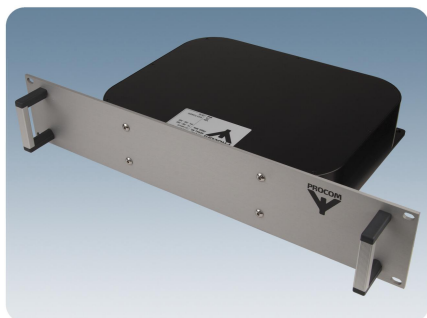
PRO-ISO-PHY-TETRA-4-N(f)



PRO-ISO-PHY-TETRA-4-TR-F-N(f)



PRO-ISO-PHY-TETRA-4-TR-B-N(f)



ORDERING DESIGNATIONS

| TYPE | TX MHZ | RX MHZ | PRODUCT NO. |
|--|-----------|-----------|-------------|
| PRO-ISO-PHY-385/390-4-N(f) | 380 - 385 | 390 - 395 | 210001945 |
| PRO-ISO-PHY-385/390-4-TR-F-N(f) | 380 - 385 | 390 - 395 | 210002008 |
| PRO-ISO-PHY-385/390-4-TR-B-N(f) | 380 - 385 | 390 - 395 | 210002009 |
| PRO-ISO-PHY-415/420-4-N(f) | 410 - 415 | 420 - 425 | 210002035 |
| PRO-ISO-PHY-415/420-4-TR-F-N(f) | 410 - 415 | 420 - 425 | 210002091 |
| PRO-ISO-PHY-415/420-4-TR-B-N(f) | 410 - 415 | 420 - 425 | 210002092 |
| ACCESSORIES | | | |
| 19" Front plate with connectors in front | | | 210002005 |
| 19" Front plate with connectors in back | | | 210002006 |

**Tested in accordance with:

Random test: EN 60068-2-64, test specification: EN 300 019-2-5 V3.0.0.

Shock test: EN 60068-2-27, test specification: EN 300 019-2-5 V3.0.0.

Bump test: EN 60068-2-29, test specification: EN 300 019-2-5 V3.0.0.

SPECIFICATIONS

| ELECTRICAL | |
|---------------------------|--|
| MODEL | PRO-ISO-PHY-TETRA-4 |
| TYPE | TETRA combiner |
| TX/RX FREQUENCY | TX: 380 – 385 MHz RX: 390 – 395 MHz or TX: 410 - 415 MHz RX: 420 - 425 MHz |
| INSERTION LOSS TX-ANT. | < 9.7 Typ. 8.5 to 9.5 dB |
| INSERTION LOSS RX-ANT. | < 9.7 Typ. 8.5 to 9.5 dB |
| ISOLATION TRX → TRX | TX - TX: > 60 dB (380 – 385 MHz & 410 - 415 MHz) RX - RX: > 60 dB (390 – 395 MHz & 420 - 425 MHz) TX - RX / RX - TX: > 60 dB |
| SWR | < 1.5 |
| MAX. POWER | 25 W/station |
| GROUP DELAY VARIATION | TX-ANT. < 120 nsec. RX-ANT. < 150 nsec. |
| MECHANICAL | |
| CONNECTOR TYPE | N-female |
| COLOUR | Black |
| DIMENSIONS (L x W x H) | 300 (excl. conn.) x 240 x 65 mm / 11.81 (excl. conn.) x 9.45 x 2.56 in. |
| WEIGHT | Approx. 6300 g / 13.89 lb. |
| ENVIRONMENTAL | |
| IP-GRADE | IP-62 |

PRO-ISO-PHY-TETRA-8

Eight-TETRA-Station Combiner

PRELIMINARY DATA SHEET

DESCRIPTION

- The PRO-ISO-PHY-TETRA-8 combiner provides the possibility of connecting up to eight TETRA radios into one common antenna.
- ETSI compliant connection of eight digital radios.
- The PRO-ISO-PHY-TETRA-8 has improved isolation between the ports - more than 60 dB - and low insertion loss.
- The use of high-quality system components such as highly selective helical duplex filters and high-performance isolators provides high isolation and secure communication.
- The smallest and most compact design on the market.
- Suitable for both stationary and mobile use.
- Also available in tray for 19" rack mounting.
- Vibration and shock tested in accordance with EN-60068 **.
- Jumper cables included.

PRO-ISO-PHY-TETRA-8-TR-F-N(f)



ORDERING DESIGNATIONS

| TYPE | TX MHZ | RX MHZ | PRODUCT NO. |
|---------------------------------|-----------|-----------|--------------------------|
| PRO-ISO-PHY-385/390-8-N(f) | 380 - 385 | 390 - 395 | Contact for availability |
| PRO-ISO-PHY-385/390-8-TR-B-N(f) | 380 - 385 | 390 - 395 | Contact for availability |
| PRO-ISO-PHY-385/390-8-TR-F-N(f) | 380 - 385 | 390 - 395 | Contact for availability |
| PRO-ISO-PHY-415/420-8-N(f) | 410 - 415 | 420 - 425 | Contact for availability |
| PRO-ISO-PHY-415/420-8-TR-B-N(f) | 410 - 415 | 420 - 425 | Contact for availability |
| PRO-ISO-PHY-415/420-8-TR-F-N(f) | 410 - 415 | 420 - 425 | Contact for availability |

** Tested in accordance with:

Random test: EN 60068-2-64, test specification: EN 300 019-2-5 V3.0.0.

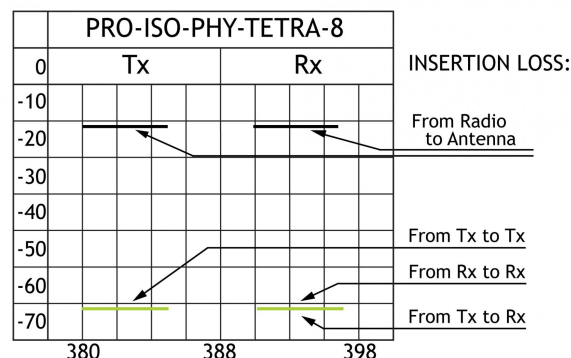
Shock test: EN 60068-2-27, test specification: EN 300 019-2-5 V3.0.0.

Bump test: EN 60068-2-29, test specification: EN 300 019-2-5 V3.0.0.

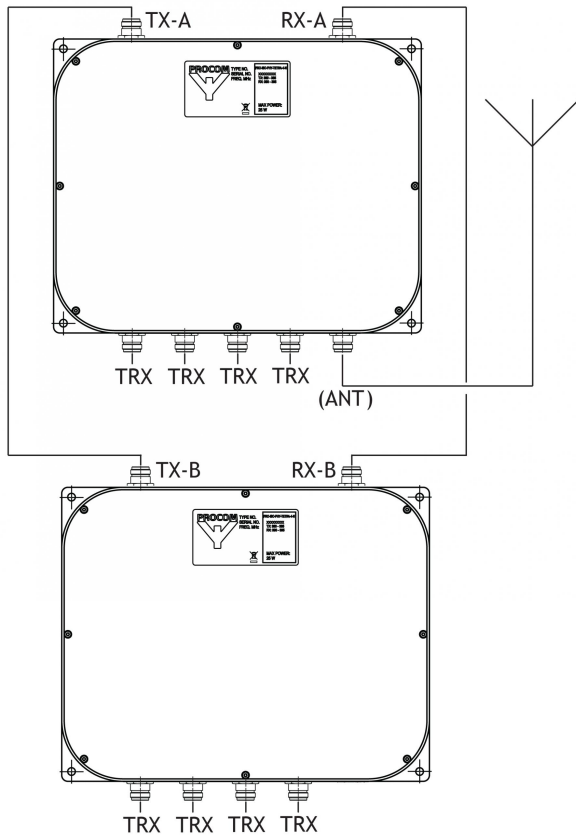
SPECIFICATIONS

| ELECTRICAL | |
|------------------------|--|
| MODEL | PRO-ISO-PHY-TETRA-8 |
| TYPE | TETRA combiner |
| TX/RX FREQUENCY | TX: 380 – 385 MHz RX: 390 – 395 MHz or TX: 410 - 415 MHz RX: 420 - 425 MHz |
| INSERTION LOSS TX-ANT. | Typ. -11.5 to -13 dB |
| INSERTION LOSS RX-ANT. | Typ. -11.5 to -13 dB |
| ISOLATION TRX → TRX | TX - TX: > 60 dB (380 – 385 MHz & 410 - 415 MHz) RX - RX: > 60 dB (390 – 395 MHz & 420 - 425 MHz) TX - RX / RX - TX: > 60 dB |
| SWR | < 1.5 |
| MAX. POWER | 25 W / station |
| GROUP DELAY VARIATION | TX-ANT. < 120 nsec. RX-ANT. < 150 nsec. |
| MECHANICAL | |
| CONNECTOR TYPE | N-female |
| COLOUR | Black |
| DIMENSIONS (W x H x D) | 19" x 2 x 2 HU x 240 mm (excl. conn.) (483 x 176 x 240 mm) / (7.02 x 6.93 x 9.45 in.) |
| WEIGHT | Approx. 12.6 kg / 27.78 lb. |
| ENVIRONMENTAL | |
| IP-GRADE | IP-62 |

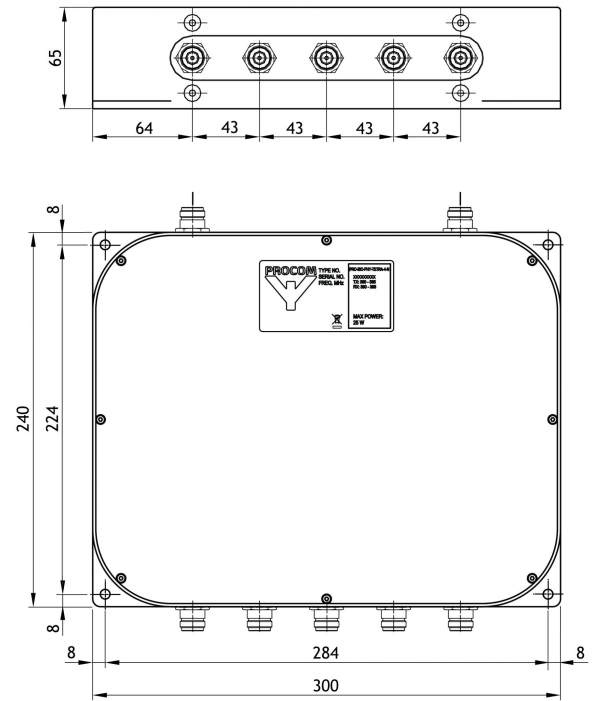
TYPICAL ATTENUATION VALUES



CONNECTION DIAGRAM



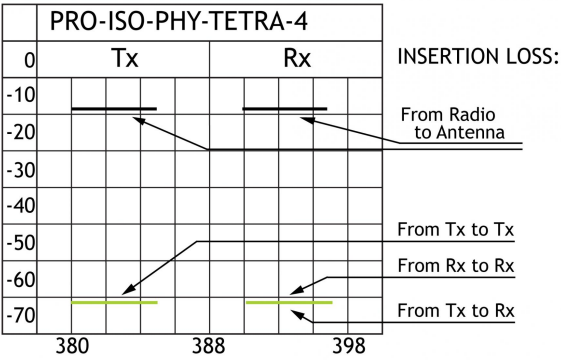
MOUNTING DETAILS



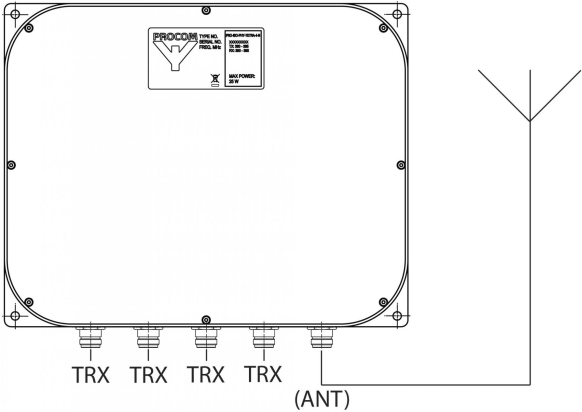
PROCOM A/S reserve the right to amend specifications without prior notice.

19/03/15

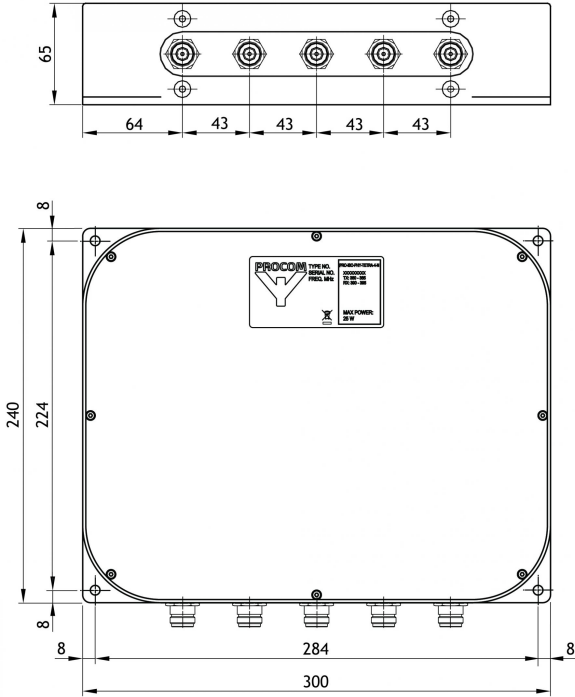
TYPICAL ATTENUATION VALUES




CONNECTION DIAGRAM



MOUNTING DETAILS



 PROCOM A/S reserve the right to amend specifications without prior notice.
08/05/15

PRO-PHY-500-3400-4

Ultra Wideband 4-way combiner supporting GSM, DCS1800, PCS1900, UMTS, WiFi 2.4, 4G LTE (2600) and WIMAX

DESCRIPTION

- Combiner for coupling of four transceivers on one common antenna.
- For parallel operation of four two-way communication radios (transceivers) where highest possible decoupling (isolation) is necessary.
- Max. transmitter power 4 x 5 W.
- Also usable as equal power divider for max. 20 W.



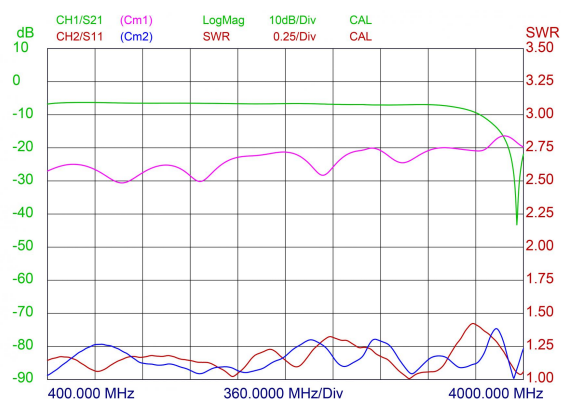
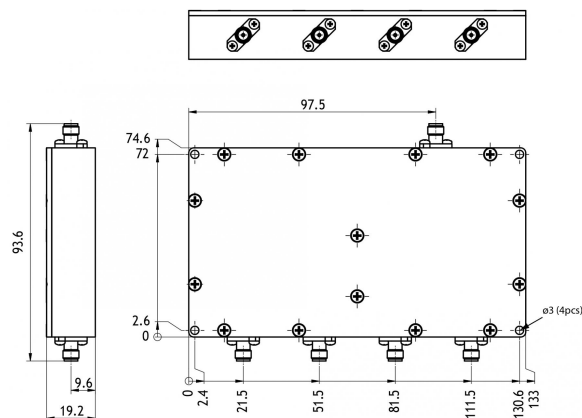
ORDERING DESIGNATIONS

| TYPE | PRODUCT NO. |
|------------------------|-------------|
| PRO-PHY 500-3400-4-SMA | 210002139 |

SPECIFICATIONS

| ELECTRICAL | |
|---|---|
| MODEL | PRO-PHY 500-3400-4-SMA(f) |
| FREQUENCY | 500 - 3400 MHz |
| MAX. INPUT POWER | 1 x 20 W if used as divider 4 x 5 W if used as coupler |
| NOMINAL DIVIDER LOSS | 6.0 dB |
| TOTAL LOSS INCL. SPLITTER LOSS / COUPLER LOSS | ≤ 9.2 dB |
| ISOLATION | Port Tx/Rx to Tx/Rx> 18 dB (typ> 20 dB) |
| IMPEDANCE | Nom. 50 Ω |
| SWR | <1.5 (Typ. < 1.25) |
| MECHANICAL | |
| TEMP. RANGE | -30° C → +60° C |
| CONNECTOR TYPE | SMA-connectors |
| DIMENSIONS (L x W x H) | 133 x 93.6 x 19.2 / 5.2 x 3.7 x 0.76 (including connectors) |
| WEIGHT | Approx. 400 g / 0.88 lb. |
| MOUNTING | ø3 mm t(four holes) |

MOUNTING DETAILS



PROCOM A/S reserve the right to amend specifications without prior notice.
20/08/15