

Wideband Base Station and Marine Antenna for the 690 - 4200 MHz Band

DESCRIPTION

- Wideband future proof base station antenna cover all 3G, 4G LTE and 5G frequencies. Also provides full band coverage for Band 8 and CBRS.
- The carefully designed, broad-banded antenna element is sealed in a high-quality cylindrical glass fiber tube, which will ensure performance undisturbed by corrosive environments.
- Large bandwidth with respect to both VSWR and gain.
- Highly suitable for duplex operation with large spacing between the Tx and the Rx frequencies for 4G or Private networks like Band 8 and CBRS.
- Provided with the sturdy "LW" mast mount – a lightweight, multipurpose, epoxy-coated mounting bracket made of non-corrosive aluminium.
- The cable can be led either on the outside or along the inside of the mast tube.
- The CXL 690-4200LW is a corrosion resistant, modern style base station and marine antenna.



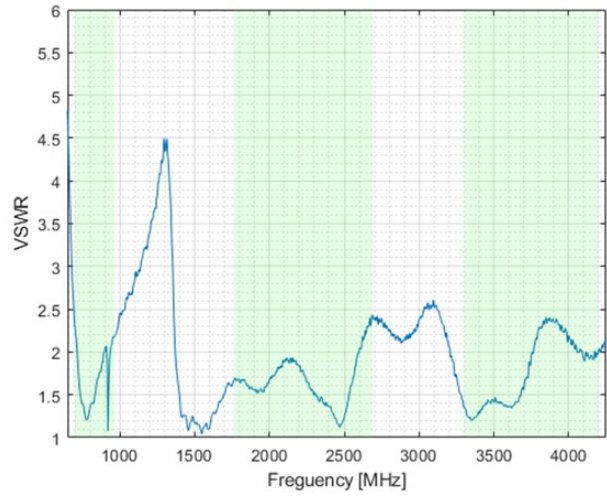
SPECIFICATIONS

Electrical			
Model	CXL 690-4200LW		
Frequency	698 - 960 MHz	1760 - 2690 MHz	3300 - 4200 MHz
Max. Input Power	100 W		
Polarisation	Vertical		
3 dB Beamwidth, E-Plane	80° ± 10°		
3 dB Beamwidth, H-Plane	Omnidirectional		
Impedance	50 Ω		
Gain	0 dBi	2 dBi	5 dBi
VSWR	< 2.5:1	Typical < 2:1	Typical < 2.5:1
Mechanical			
Connection(s)	N(f)		
Materials	Shroud : Polyurethane-coated glass fibre Mounting bracket : Seawater resistant aluminium, epoxy-coated Clamps : Stainless steel		
Length	Approx. 375 mm / 14.76 in.		
Dimensions	375 x 23 mm / 14.76 x 0.91 in.		
Wind Load	9.6 N (160 km/h)		
Weight	Approx. 0.6 kg / 1.32 lb.		
Mounting	On 16 - 54 mm / 0.63 - 2.13 in. dia. mast tube		
Environmental			
Operating temperature range	-30 °C to +70 °C		
Survival Wind Speed	200 km/h		
Ingress Protection	IP66		

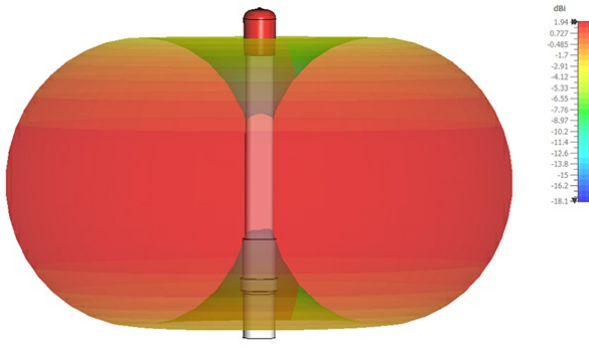
ORDERING

Model	Product No.	Description	Frequency
CXL 690-4200LW	100000907	Wideband Dipole Antenna	690 - 4200 MHz

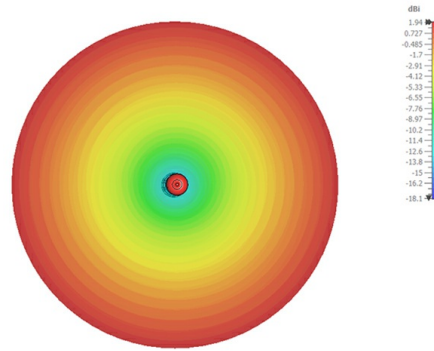
TYPICAL VSWR CURVE



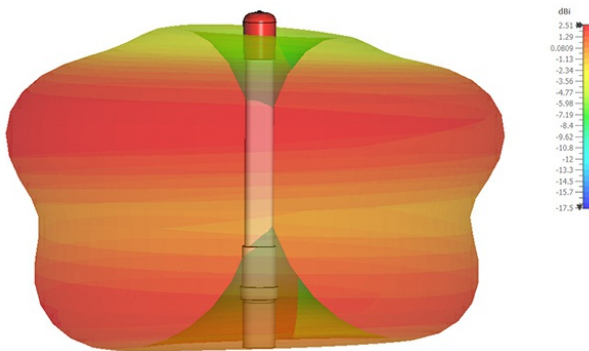
TYPICAL RADITION PATTERN (E-PLANE) FOR 690 MHZ



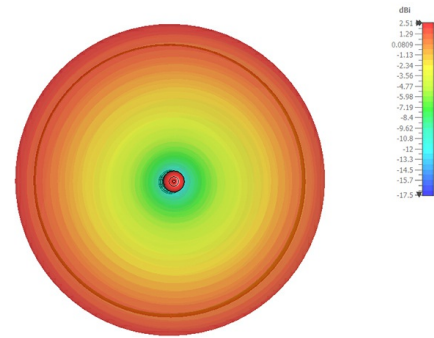
TYPICAL RADITION PATTERN (H-PLANE) FOR 690 MHZ



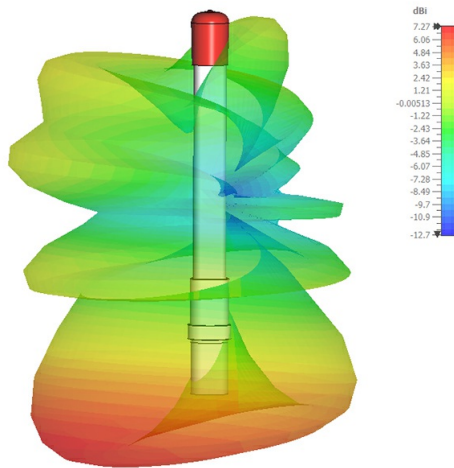
TYPICAL RADITION PATTERN (E-PLANE) FOR 710 MHZ



TYPICAL RADITION PATTERN (H-PLANE) FOR 710 MHZ



TYPICAL RADITION PATTERN (E-PLANE) FOR 3300 MHZ



TYPICAL RADITION PATTERN (H-PLANE) FOR 3300 MHZ

