



## Smart Signal Booster



# CEL-FI GO X

### Cel-Fi GO X for Buildings and Remote Places. Built for indoor / outdoor tough to reach spaces.

This 100 dB gain signal booster is ideal for use in commercial properties, government buildings, agricultural settings, small manufacturing operations, rural areas, businesses, and large homes.

- Licence exempt and freely deployable in the UK and Ireland for Voice and Data
- 100dB max signal gain with typical coverage area 15,000 sq.ft./1,400m<sup>2</sup>
- Supports one network per device, can be switched between networks
- Boosts both 3G and 4G signal coverage for O2, EE, Three or Vodafone, and all hosted MVNO under the Network of your choice
- Indoor/outdoor IP66 rated
- Intelliboost Chipset – Unconditionally Network Safe
- Easily switch between boosting Vodafone, O2, EE or Three signal using the WAVE App
- Cel-Fi GO X is CE and FCC approved
- Licence exempt under UK law and fully meets the requirements of Ofcom SI 2018/399
- Licence exempt under Irish law and fully meets the requirements of ComReg S.I. No. 283 of 2018

# CEL-FI GO X Features

## Cel-Fi WAVE Portal

- A dashboard overview of all your systems
- Data and performance metrics sent by the Wave App to the Wave Portal
- Software update management
- Users and group management

## Network Safe

Self-organising edge intelligence ensures that Cel-Fi GO do not interfere with other indoor wireless products such as Wi-Fi routers, Small Cells, and Distributed Antenna Systems (DAS).

High speed Automatic Gain Control ensures that Cel-Fi GO are unconditionally network safe, and enables more simultaneous calls and higher data speeds.



## IntelliBoost™ Chipset

The Nextivity IntelliBoost™ baseband processor is the first six-core processor designed specifically to optimise the indoor transmission and reception of 3G and 4G wireless signals.

With advanced filtering, equalisation and echo-cancellation techniques, Nextivity has developed an architecture which delivers unprecedented in-building data rates and pervasive 3G and 4G connectivity. The IntelliBoost™ processor ensures that Cel-Fi products never negatively impact the mobile network while providing maximum coverage.

### Power

9.6 – 16.5V  
2A current draw  
16W nominal power consumption

### Environmental

Operating temperature: 0° to 65°C  
Convection Cooling  
Relative humidity: 0% to 95%, noncondensing  
RoHS 2 (European and China compliant)  
WEEE  
NEMA 4  
Surface Temp at any point (30° ambient): 53°C

### Installation

Mounting hardware included

### Radio Performance

The GO system can boost up to two (2) bands concurrently. Either profile can be selected:  
A) One (1) high band boost and one (1) low band boost or  
B) Two (2) high bands boost

### Antenna Ports

*(Donor and Server)*

699 – 2180 Mhz  
Impedance: 50 Ohm  
Return Loss: 8 dB  
Output Protection

### Physical Specifications

GO X  
96.5x43.25x272.5mm

### DC Power Plug and Jack

4 rated power plugs and jack

### Compliance

*(check individual product version for specific regional compliance)*

3GPP T S 25.143 Rel.10  
3GPP T S 36.143 Rel.10  
FCC Part 15, 20, 22, 24, 27  
IC (Industre Canada)  
Bluetooth BQB  
CE

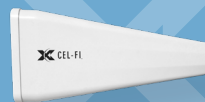
### System Management

*(software)*

Supports Cel-Fi WAVE cloud portal  
Cel-Fi WAVE Portal capability:

- Status (list and map)
- Commissioning
- Diagnostics
- Software Updates
- Settings
- Reporting
- Alarms & Notifications

### Antenna options



Wideband Directional Antenna



Wideband Indoor Omni Antenna



Wideband Panel Antenna